

# **Allen Bradley ControlLogix**



## **Module 1**

### **Screen Layout**

### **RSLogix5000/ Studio 5000 Software**

### **Student Materials**

## **Student Materials for Module 1: ScreenLayout to RSLogix5000 / Studio 5000**

Page

RSLogix5000 /Studio 5000 Screen Definitions.....	3
RSLogix5000 /Studio 5000 Toolbars .....	5
RSLogix5000 /Studio 5000 Help Menus .....	6
RSLogix5000 / Studio 5000 Online.....	9
Review Questions.....	13

## RSLogix5000 / Studio 5000 Screen Definitions

Main Screen RSLogix 5000 / Studio 5000 software

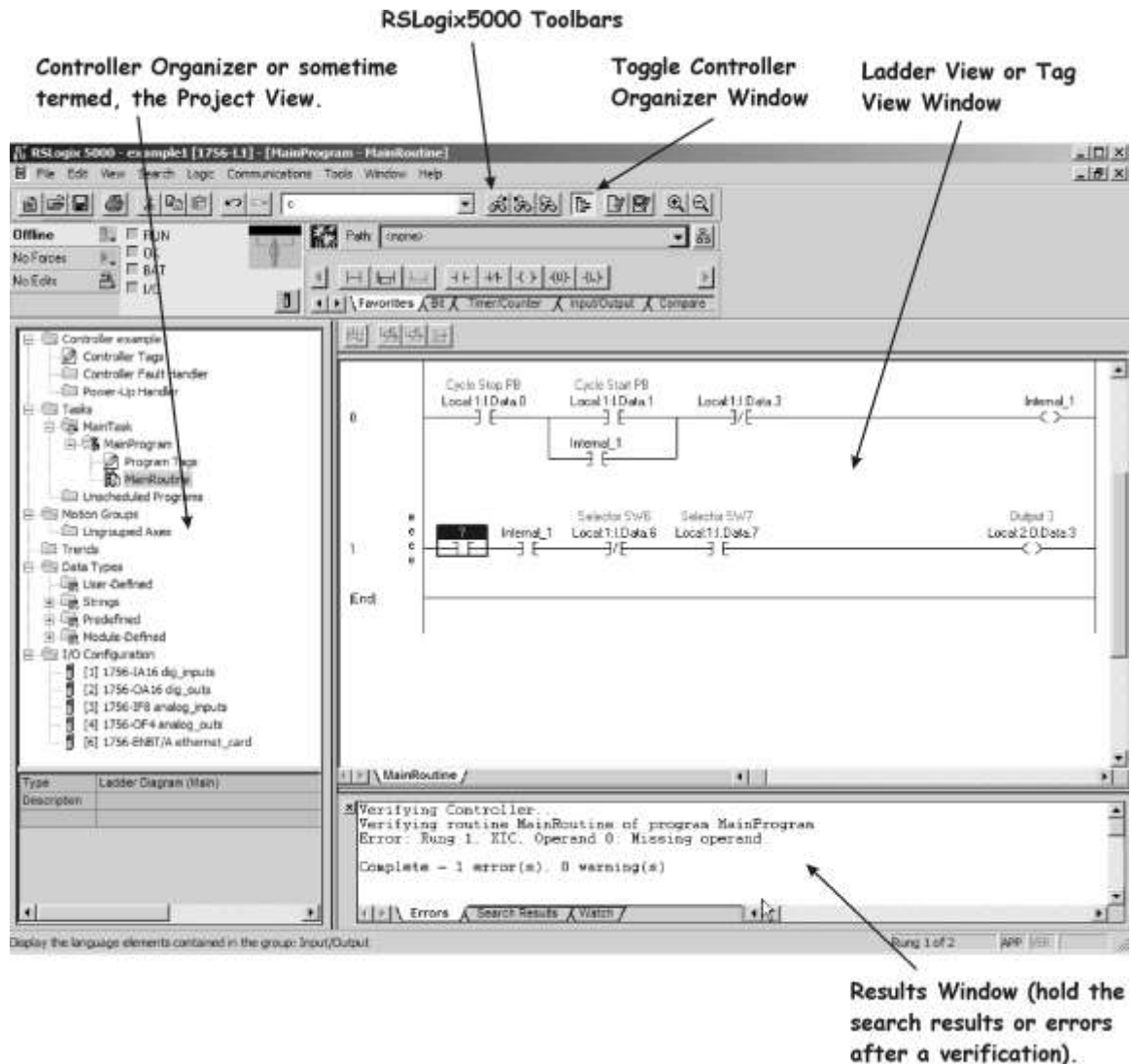


Figure A - 1. The RSLogix5000 Main Window.

The Controller Organizer screen is similar to the Project View window in the RSLogix5000 software. The right – side window for the Ladder View will also be used as the Tag Monitor. To view the ladder logic across the full window the user can do an “Alt 0”.

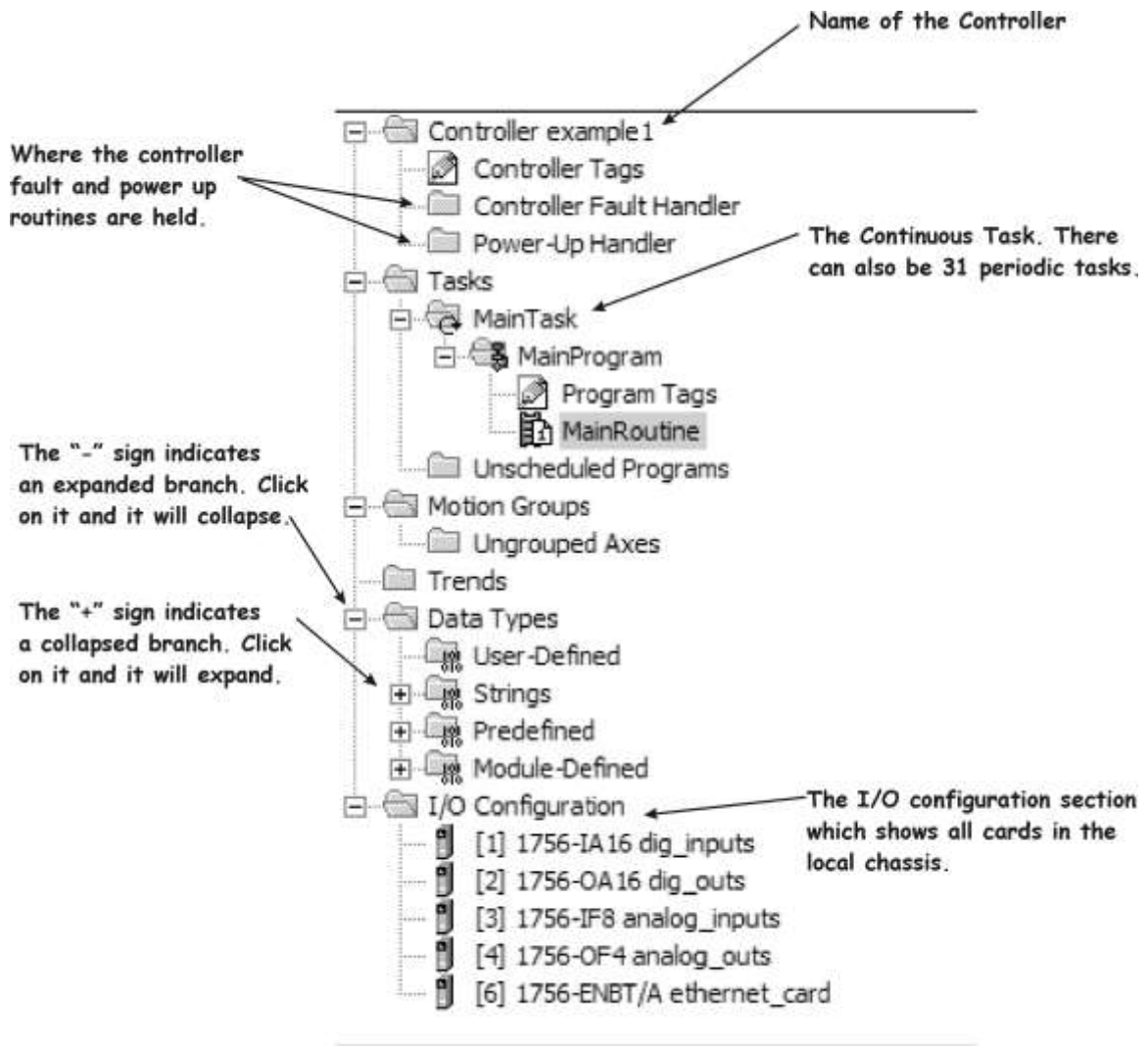


Figure A - 2. The Controller Organizer.

## Tool bars

The user can customize the toolbars in RSLogix5000 / Studio 5000. The following illustration shows how to turn on and shut off toolbars.

### The Default Toolbars in RSLogix5000

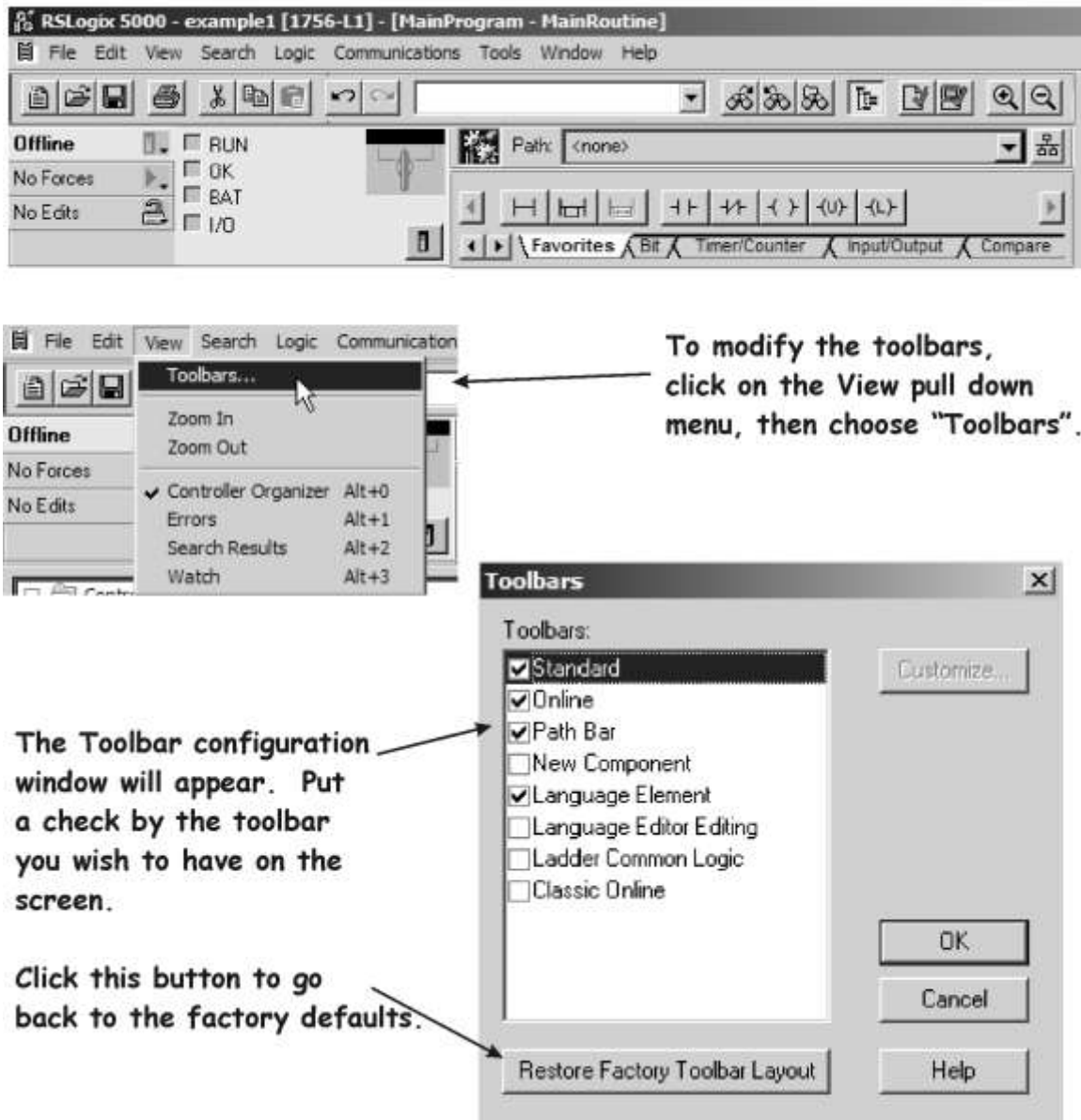
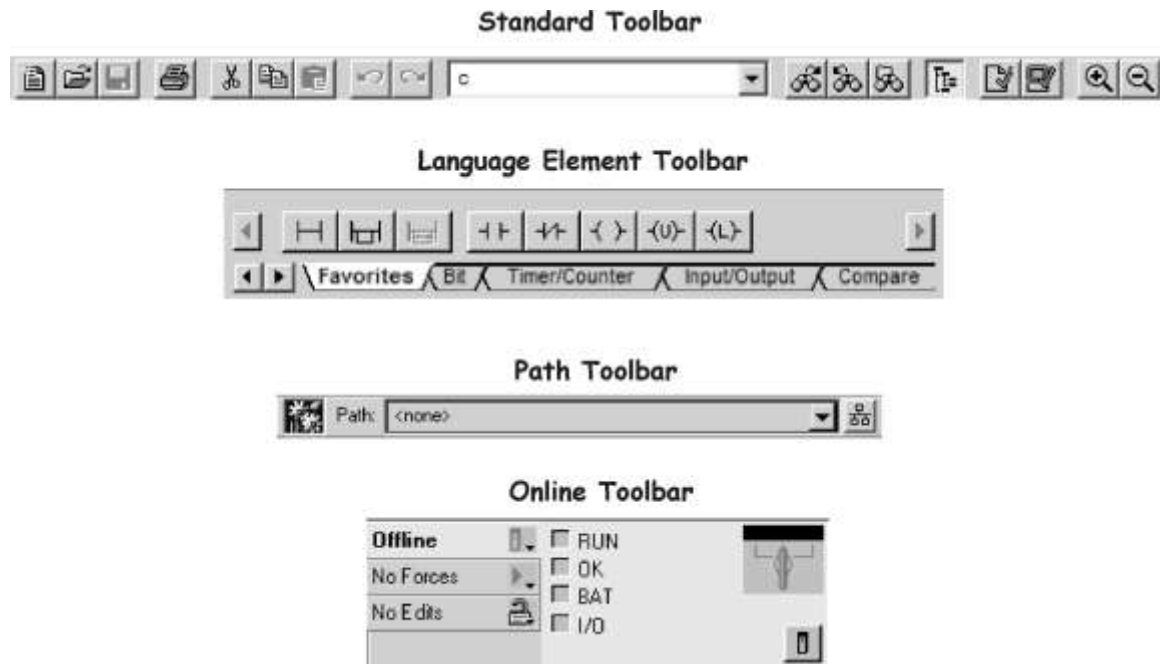


Figure A -3. The default toolbars in RSLogix5000.

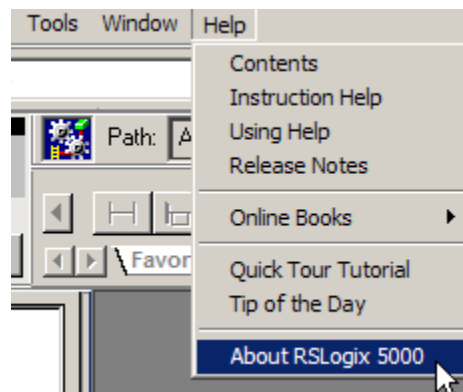
The following illustration shows the name of each toolbar in the RSLogix5000 / Studio 5000 software.



**Figure A -4. Toolbars defined.**

## Help Menus

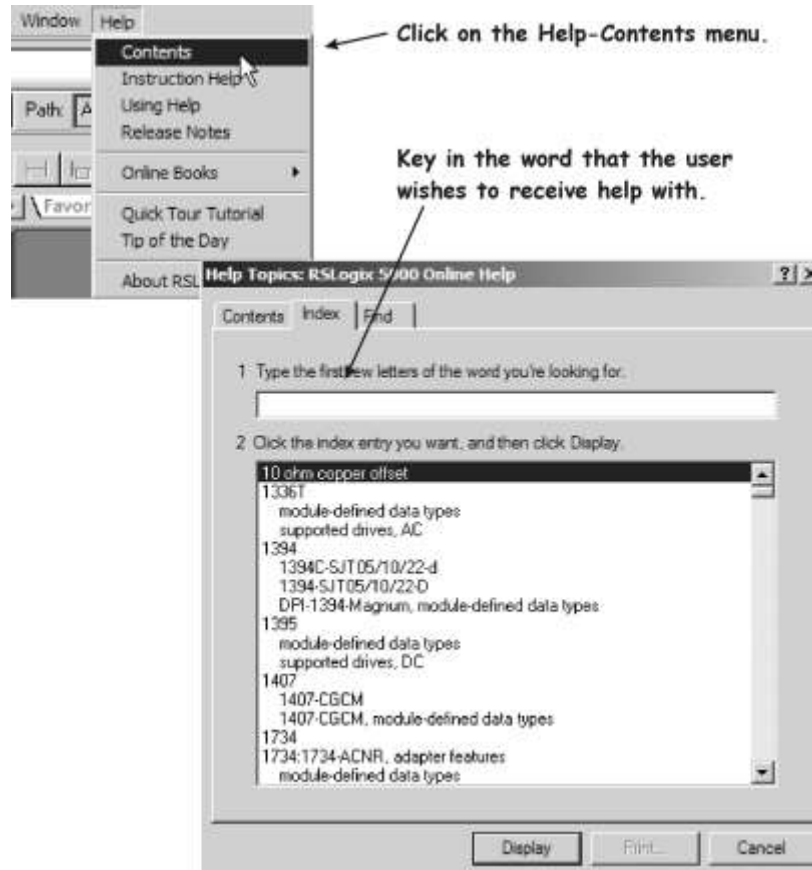
The Help system in RSLogix5000 / Studio 5000 holds a wealth of information for the user.



**Figure A - 5. Help - About RSLogix 5000.**

The Help-About RSLogix 5000/ Studio 5000 menu will show the user the serial number, the number for the Rockwell Support Services, and the revision number for the software.

The Help-Contents – lets the user look up the indexed information in the help file.

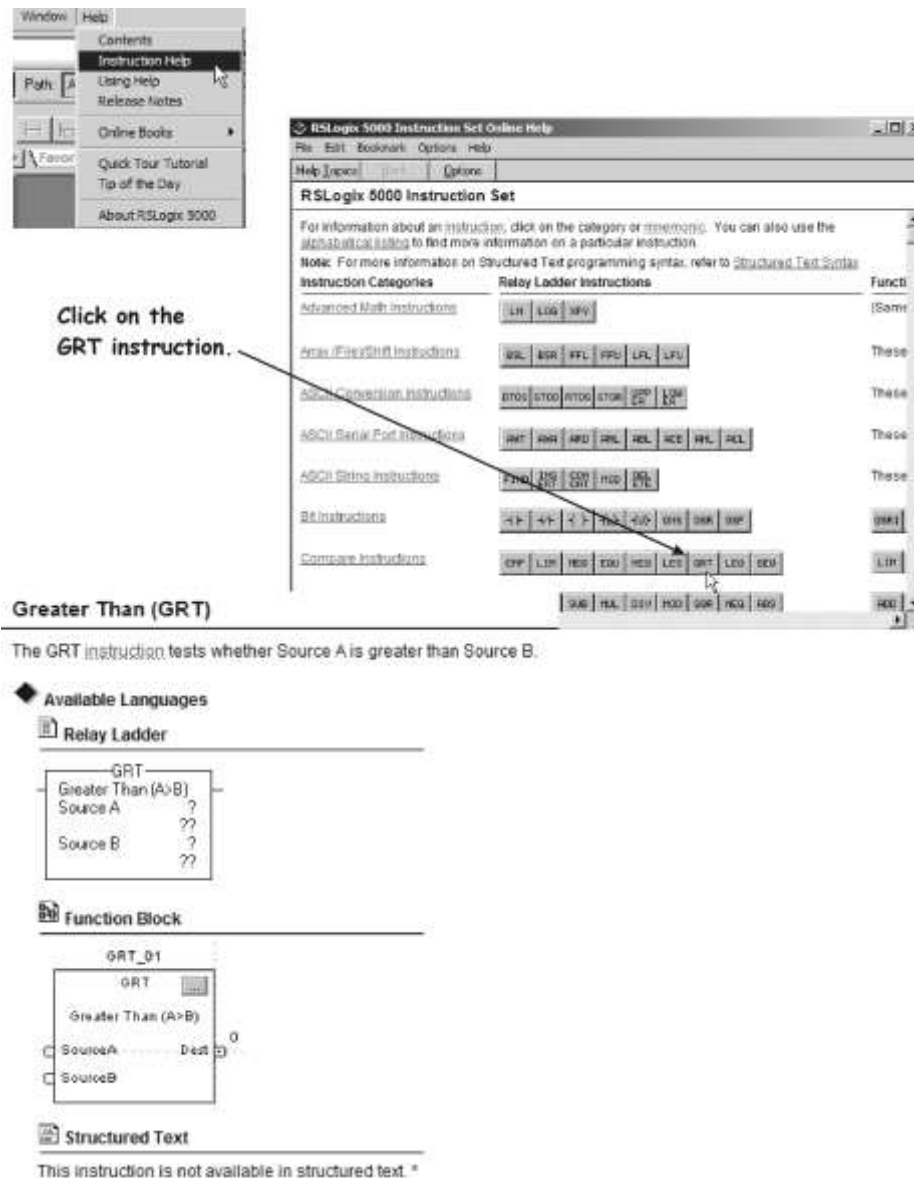


**Figure A - 6. Content Help.**

The Help-Instruction Help will allow the user to look up information about any instruction (TON, CTU, RES, etc.).

Note: In Studio 5000 software Instruction Help can also be accessed by right-clicking an instruction in the Ladder Logic screen

In the following illustration shows an example of the user looking up the help information about the “GRT” instruction. This information can also be sent to a printer for hard copy.

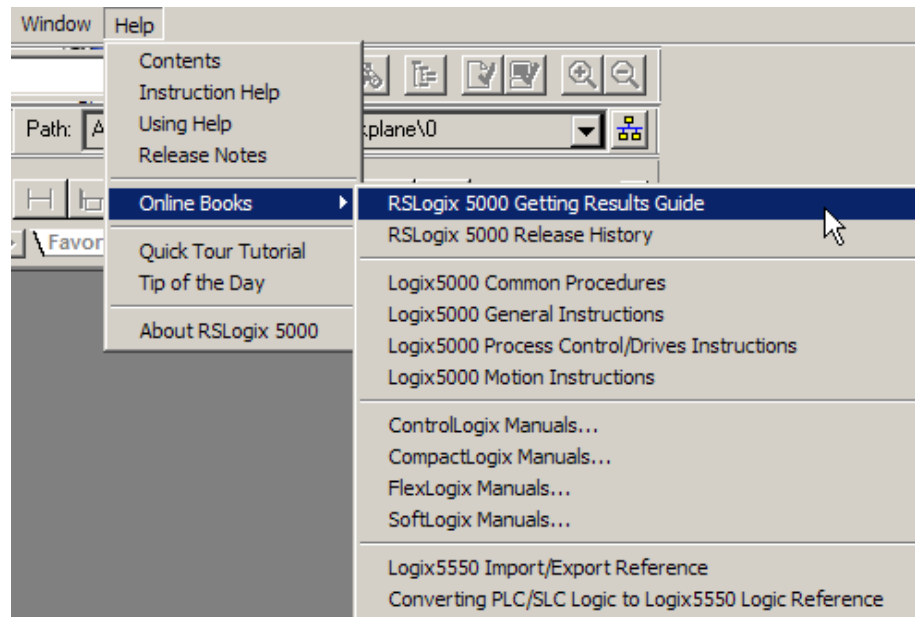


**Figure A-7. Instruction Set Help.**

Help – Online Books is a tremendous resource. All of the ControlLogix manuals for both hardware and software are stored as .PDF files in this menu. Adobe Acrobat Reader software is used to view the content of these manuals. The content of these manuals are more current than printed manuals. They are updated with each update of the software.



The following illustration shows how to view the Online Manual, “RSLogix5000 Getting Results Guide”.



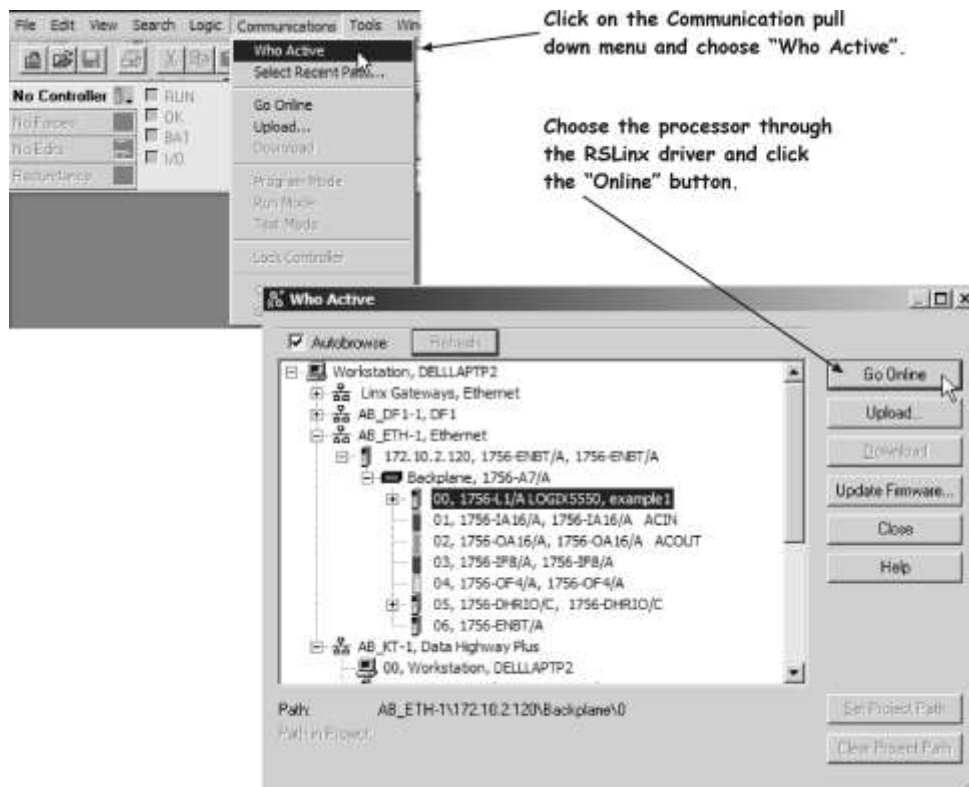
**Figure A-8. Help – Manuals Online.**

## Online Screen Definitions

When the user goes Online to the processor to do troubleshooting or program/data modification, RSLogix5000 / Studio 5000 goes out to the Project Directory to find file that has a matching processor name, and then opens the description data base to show the documentation on the ladder logic. This means while viewing Online, the ladder and data information comes from the processor and the documentation comes from the .ACD file in the Project Directory.

Note: With 1756-L7x processors and Studio 5000 the documentation can be downloaded to the PLC along with ladder and data information

To go Online to a processor, make sure RSLinx is running with a configured driver that shows a visual presence of the processor. Start RSLogix5000 Studio 5000 and do the following steps.



**Figure A - 9. Steps to going Online.**

RSLogix5000 / Studio 5000 should then be Online to the processor, as shown in the following illustration. Notice that the ICON on that has animation (or motion). This means that the software is Online to the processor.

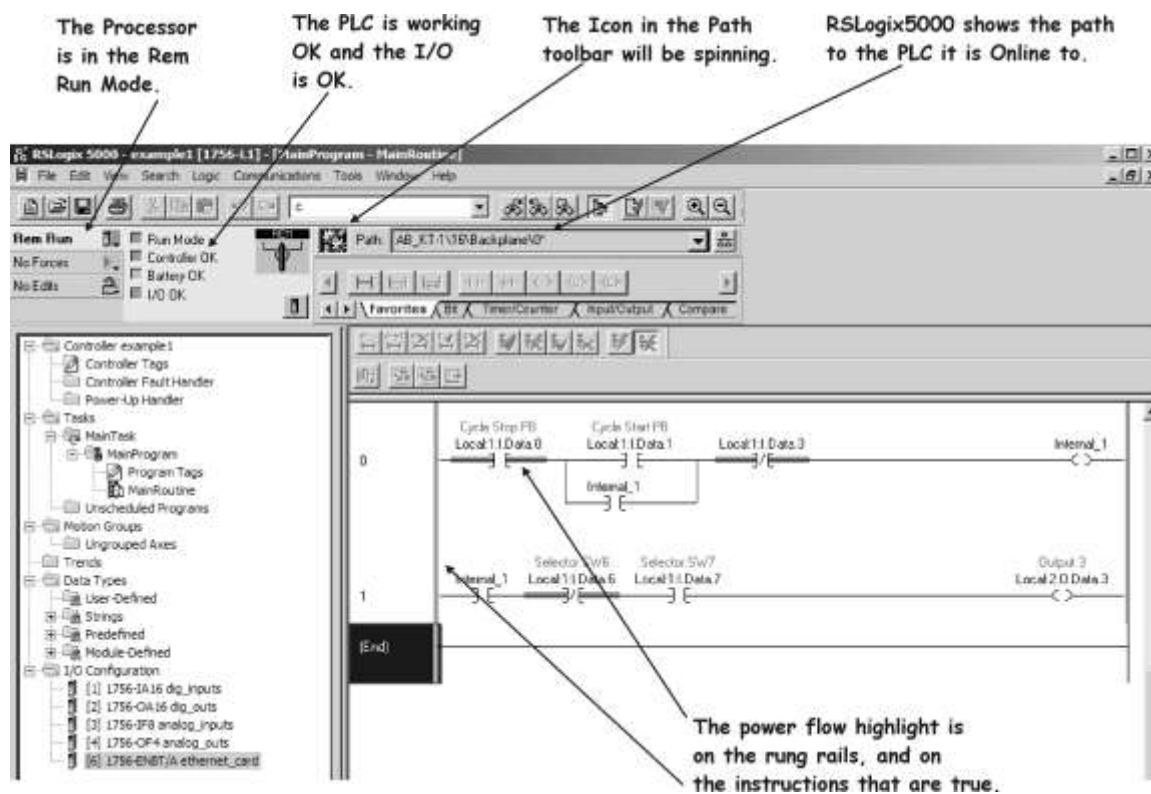


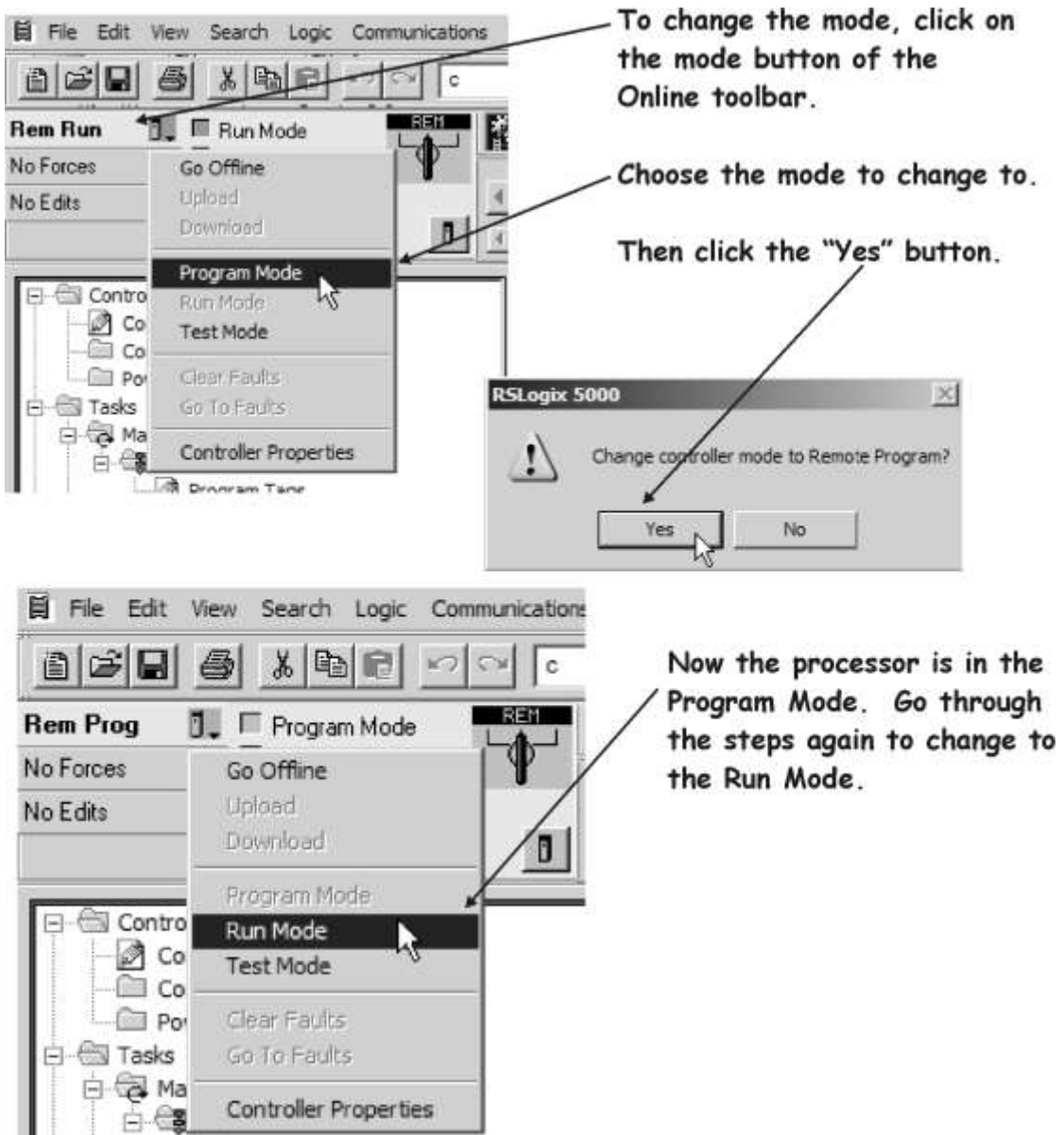
Figure A-10. The Online Window.

## Changing the Processor Mode

The user can change the mode of the processor with either the key switch located on the front of the processor, or with the RSLogix5000 software.

If the mode is changed with the RSLogix5000 / Studio 5000 software, the processor key switch must be in the “REM” position. This means a remote device can change the mode. The user can change the mode on the Online Toolbar.

The following illustration shows how to change the mode with the software.



**Figure A - 11. Changing the Processor Mode.**

## Review Questions

1.     **T     F     The controller tags will be sent to the PLC during a download.**
2.     **The designation in the controller organizer window that indicates that an object can be expanded out (there are sub-objects) is:**
  - a)    A “+” sign.
  - b)    A “-“ sign.
  - c)    A folder.
  - d)    An asterisk “\*”.
3.     **The command used to begin monitoring the project running in a PLC is:**
  - a)    Download
  - b)    Upload
  - c)    Online
  - d)    Verify
4.     **T     F     RSLinx must be running in order to go Online to an L5000 processor with RSLogix5000 /Studio 5000.**
5.     **While viewing a program Online to a processor with RSLogix5000, what data on the screen is from the project on the hard drive?**
  - a)    Ladder Logic
  - b)    Data Values
  - c)    Tags
  - d)    Documentation

6.     **T     F     When a program is downloaded to an L5000 processor, the machine the processor is running will be shut down.**
7.     **T     F     The program can be downloaded to a PLC, if the key switch is in the “RUN” position.**
8.     **T     F     When a program is uploaded from an L5000 processor, the machine the processor is running will be shut down.**
9.     **T     F     ControlLogix manuals are included in the Help files.**
10.    **T     F     Typically a .ACD file will be smaller in size than a .L5K file, for a given project.**
11.    **The file type that is compressed and must be imported into RSLogix5000 / Studio 5000.**
- a)    .ACDC
  - b)    .L5K
  - c)    .RSS
  - d)    .CSV
12.    **What menu in the RSLogix5000 / Studio 5000 software will set the Project Directory path?**
- a)    File – Properties.
  - b)    Edit – Preferences.
  - c)    View – Watch.

d) Tools – Options.

**Review Question Answers:**

1) T

2) a

3) c

4) T

5) d

6) T

7) F

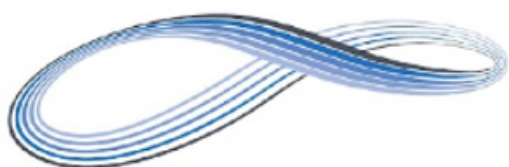
8) F

9) T

10) F

11) b

12) d



STRENGTHENING  
COMMUNITY COLLEGES  
TRAINING GRANTS

**DOL DISCLAIMER:**

The document was originally created under “I AM iSTAR” a DOL funded project and used in this SCC project. “This workforce product was funded by a grant awarded by the U.S. Department of Labor’s

Employment and Training Administration. The product was created by the grantee and does not necessarily reflect the official position of the U.S. Department of Labor. The U.S. Department of Labor makes no guarantees, warranties, or assurances of any kind, express or implied, with respect to such information, including any information on linked sites and including, but not limited to, accuracy of the information or its completeness, timeliness, usefulness, adequacy, continued availability, or ownership. This product is copyrighted by the institution that created it.”



This work is licensed under a [Creative Commons Attribution 4.0 International License](https://creativecommons.org/licenses/by/4.0/).